



ASSOCIATION OF SHAREWARE PROFESSIONALS (ASP) OMBUDSMAN STATEMENT

Global Majic Software, Inc. is a member of the **Association of Shareware Professionals (ASP)**. ASP wants to make sure that the shareware principle works for you. If you are unable to resolve a shareware-related problem with **Global Majic Software, Inc.** by contacting them directly, ASP may be able to help. The ASP Ombudsman can help you resolve a dispute or problem with an ASP member, but does not provide technical support for members' products.

Please write to the ASP Ombudsman at:

545 Grover Road
Muskegon, MI 49442-9427 USA
FAX 616-788-2765

or send a CompuServe message via CompuServe Mail to:

ASP Ombudsman 70007,3536



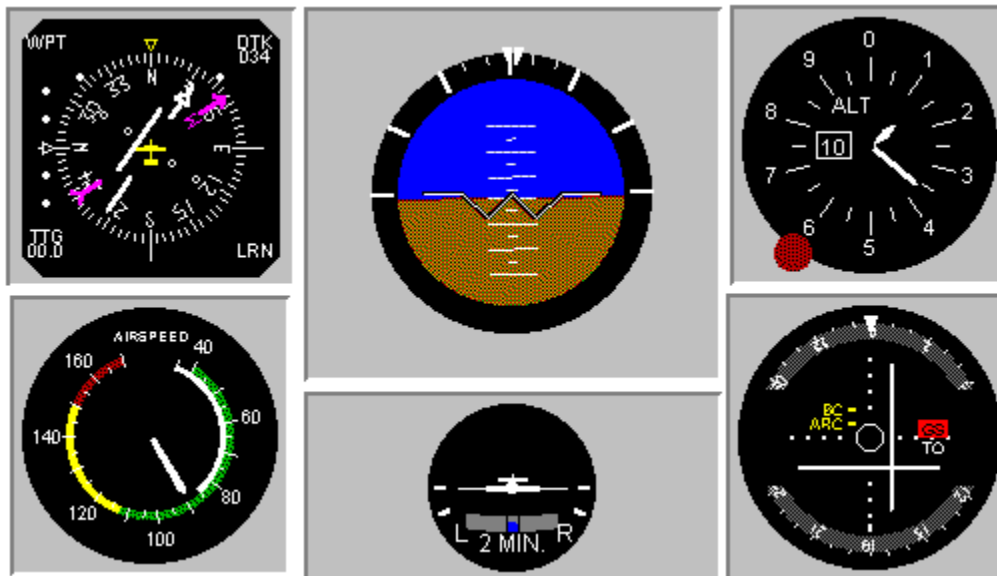
AIRCRAFT INSTRUMENT CONTROL

[Properties](#)

[Events](#)

Description:

Aircraft Instrument Controls display a variety of small airplane flight instruments including compass, heading indicator, altimeter, vertical speed indicator, airspeed indicator, horizontal situation indicator, artificial horizon, coordinated turn indicator, course indicator, Automatic Direction Finder, Radio Magnetic Indicator, and Omni-Bearing Indicator. The controls can be used as input controls when MouseControl is set to **TRUE**. The controls include bevels for a 3D appearance.



Events:

Change
Click
DbClick
MouseDown
MouseMove
MouseUp
Turn

Properties:

| | | |
|-----------------------|------------------------|--------------------|
| ADFBearing | Height | OBIARCFlag |
| AirspeedVFE | HSIBearing | OBIBackCourse |
| AirspeedVMax | HSICompass | OBICourse |
| AirspeedVNE | HSICourseDelta | OBICourseDeviation |
| AirspeedVNO | HSICourseDeviation | OBI.GlideSlope |
| AirspeedVS0 | HSICourseDisplay | OBIGSFlag |
| AirspeedVS1 | HSICourseHeading | OBI NAVFlag |
| AltBarometer | HSIDistance | OBI ToFrom |
| AltBarometricPressure | HSIDistanceDisplay | OrdCourse |
| AutoRedraw | HSIGlideSlopeDelta | Pitch |
| BackColor | HSIGlideSlopeDeviation | Redraw |
| BackgroundPicture | HSINavigationSource | RMIBearing |
| Bank | HSISpeed | RMICompass |
| BevelInner | HSITime | TabIndex |
| BevelOuter | HSITimeSpeedDisplay | TabStop |
| BevelWidth | Inclinometer | Tag |
| BorderWidth | Index | Top |
| ClimbRateMax | Left | Turn |
| CompassStyle | MouseControl | Value |
| DisplayMode | MousePointer | Visible |
| Enabled | Name | Width |
| FontSize | | |



AUTOMOBILE (CAR) GAUGE CONTROL

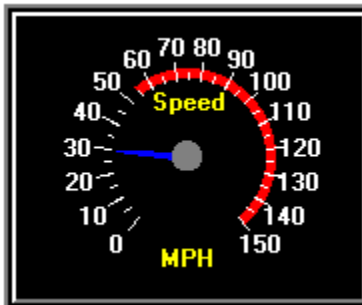
[Properties](#)

[Events](#)

Description:

Car Gauge Instrument Controls display a variety of automobile instruments including tachometer, speedometer, fuel level, oil pressure, amp gauge, and water temperature. The controls can be used as inputs when MouseControl is set to **TRUE**. Additionally, they include bevels for a 3D appearance.

Examples:



Events:

Change
Click
MouseDown
MouseMove
MouseUp

Properties:

| | | |
|-------------------|--------------|--------------|
| AutoRedraw | FontUnder | NeedleColor |
| BackgroundColor | FrameColor | OutlineAlign |
| BackgroundPicture | FramePicture | OutlineColor |
| BevelInner | FrameScaleX | OutlineTitle |
| BevelOuter | FrameScaleY | OutlineWidth |
| BevelWidth | FrameStyle | Redraw |
| BorderType | GaugeType | ShowDanger |
| BorderWidth | Height | ShowWarning |
| CaptionColor | HubColor | TabIndex |
| Danger | HubScale | TabStop |
| Delta | Index | Tag |
| Enabled | Left | TicColor |
| FontBold | Max | Top |
| FontItalic | Min | Value |
| FontName | MouseControl | Visible |
| FontSize | MousePointer | Warning |
| FontStrike | Name | Width |



Global Majic Software, Inc.

Instrumentation Custom Control Library



[Aircraft Instrument Control](#)



[Automobile Gauge Control](#)



[Generic Gauge Control](#)



[Generic Knob Control](#)



[LED Control](#)



[Linear Gauge Control](#)



[Odometer Control](#)



[Percentage Indicator Control](#)



[Selector Control](#)



[Slider Control](#)



[Toggle Switch Control](#)

[What Is Shareware?](#)

[Why Register?](#)

[Registration](#)

[Product Support](#)

[Copyright Information](#)

COPYRIGHT INFORMATION

All **Global Majic Software, Inc.** software programs, shareware, and freeware are protected under the copyright laws of the United States and foreign countries. All rights are reserved to **Global Majic Software, Inc.** Violations of copyright laws are investigated by the FBI. Distribution of **Global Majic Software, Inc.** products implies that you have read and agreed to the distribution terms described below:

INTENT

Global Majic Software, Inc. seeks to distribute its shareware as widely as possible. However, we want the end-users of our software to be properly informed that it is shareware.

DISTRIBUTOR INFORMATION AND LICENSE INFORMATION

The license information and distribution requirements in this document supersede all previous license statements. To continue to distribute **Global Majic Software, Inc.** products, you must adhere to the licensing and distribution requirements below.

If you are a mail order or BBS-type distributor of shareware software, you may distribute these programs as they are, without any changes other than expanding files contained in the ZIP archives. However, you have the responsibility to check from time to time, at a minimum interval of 6 months, for new versions of these programs, and to update your copies in a timely manner. **Global Majic Software, Inc.** will gladly send you a diskette containing the current versions on request.

You must fully identify all **Global Majic Software, Inc.** programs in your advertising, by the program's full name and version, and indicate the registration fee in the program description. The words **Global Majic Software, Inc.** must appear in all program descriptions.

SHAREWARE DISCLOSURE REQUIRED

All advertising and packaging information including references to **Global Majic Software, Inc.** products must contain a statement explaining the shareware concept. Specifically, that statement must explain that shareware software MUST be registered by the user, after a trial period, by paying a registration fee, and that all monies paid for the shareware version are duplication and distribution charges only. All such statements must be clearly displayed in a position where they are likely to be read by potential customers.

RETAIL RACK AND CD-ROM DISTRIBUTION

If you distribute shareware in a retail setting in racks, store displays, vending machines, at computer fairs, or in any way other than normal BBS or catalog-based sales, you must contact **Global Majic Software, Inc.** for permission to distribute any **Global Majic Software, Inc.** program. Rack or retail-like sales require a special distribution license, normally requiring royalties paid to **Global Majic Software, Inc.** If you distribute shareware on CD-ROM disks, you must also contact **Global Majic Software, Inc.** before including any **Global Majic Software, Inc.** shareware programs on a CD-ROM disk. Normally, permission is granted, but current versions must be included and all old versions of any **Global Majic Software, Inc.** program removed from any CD-ROM disk containing **Global Majic Software, Inc.** products.



GENERIC GAUGE (AGAUGE) CONTROL

[Properties](#)

[Events](#)

Description:

The generic Gauge Control is a highly customizable gauge or meter control. Properties are provided to modify gauge scales, tics, needles, annulars, captions, border and background. The mouse can optionally be used to change needle values.

The properties which are used for sizing and positioning tics, annulars, needles, captions and hubs generally have a value between -1 and +1 which corresponds to the size of the control. These units are used as opposed to pixels or twips in order to simplify re-sizing the control at design time.

Scales:

Scales are used to define the extent of the units displayed by the gauge, the location of the gauge center, and the gauge's start and stop angles. The examples below show various instruments with a wide range of start-stop angles, start-stop values, and scale positions. The control supports multiple scales as well.

Needles:

As shown in the examples below, needles can be displayed in a variety of shapes and sizes. Properties are provided to modify the needle's style, length, width, color and associated scale. User defined needle shapes can be specified as demonstrated in the pitch and roll indicators. Multiple needles can be placed on a single gauge as shown below:

Tics:

Tics are used to mark intervals on the instrument's face. Properties are provided to set the tic's style, start-stop values, interval, inner-outer radii, width, color, label positions, and associated scale.

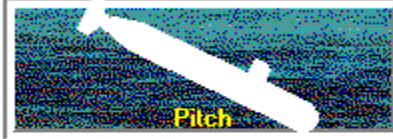
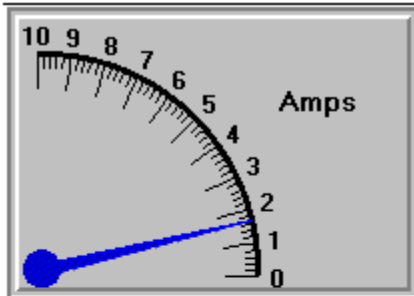
Annulars:

Annulars are used for aesthetics as well as indicators of operating ranges. Properties are provided to modify the annular's start-stop values, inner-outer radii, color, and associated scale. Additionally, multiple annular regions may be placed on a single instrument.

Captions:

The instrument can be embellished with multiple captions to indicate the type of measurement being displayed, units used or any other informative or decorative labeling.

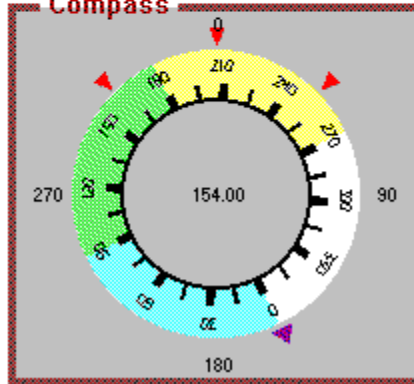
Examples:



Stop Watch



Compass



Events:

Change
Click
GotFocus
LostFocus
MouseDown
MouseMove
MouseUp
Turn

Properties:

| | | |
|--------------------|-----------------------|-----------------|
| AnnularColor | FrameColor | Redraw |
| AnnularFloat | FramePicture | ScaleDirection |
| AnnularFloatOffset | FrameScaleX | ScaleID |
| AnnularID | FrameScaleY | ScaleMaxValue |
| AnnularInnerRadius | FrameStyle | ScaleMinValue |
| AnnularOuterRadius | Height | ScaleOriginX |
| Annulars | HubColor | ScaleOriginY |
| AnnularScaleID | HubID | Scales |
| AnnularStartValue | Hubs | ScaleStartAngle |
| AnnularStopValue | HubScale | ScaleStopAngle |
| AutoRedraw | HubScaleID | Shape |
| BackgroundColor | Index | TabIndex |
| BackgroundPicture | Left | TabStop |
| BevelInner | MouseControl | Tag |
| BevelOuter | MousePointer | TicColor |
| BevelWidth | Name | TicDeltaValue |
| BorderType | NeedleColor | TicFloat |
| BorderWidth | NeedleDigital | TicFloatOffset |
| Caption | NeedleDigitalColor | TicFontID |
| CaptionColor | NeedleDigitalDecimals | TicID |
| CaptionFontID | NeedleDigitalFontID | TicInnerRadius |
| CaptionID | NeedleDigitalX | TicLabel |
| Captions | NeedleDigitalY | TicLabelRadius |
| CaptionX | NeedleID | TicLabelRotated |
| CaptionY | NeedleLength | TicOuterRadius |
| Enabled | Needles | Tics |
| FontBold | NeedleScaleID | TicScaleID |
| FontDialog | NeedleShape | TicStartValue |
| FontID | NeedleStyle | TicStopValue |
| FontItalic | NeedleValue | TicStyle |
| FontName | NeedleWidth | TicWidth |
| Fonts | OutlineAlign | Top |
| FontSize | OutlineColor | Visible |
| FontStrike | OutlineTitle | Width |
| FontUnder | OutlineWidth | |



KNOB CONTROL

Properties

Events

Description:

The Knob Control is a highly customizable knob or dial control. Properties are provided to modify knob style, mark, scale, tics, annulars, captions, border and background. The mouse may optionally be used to change knob values. Additionally, there are snap and multiturn functions.

The properties which are used for sizing and positioning tics, annulars, needles, captions and hubs generally have values between -1 and +1 which correspond to the size of the control. These units are used as opposed to pixels or twips in order to simplify re-sizing the control at design time.

Scale:

Scale is used to define the extent of the units displayed on the knob, the location of the knob center, and the knob's start and stop angles. The examples below show various instruments with a wide range of start-stop angles, start-stop values, and scale positions.

Knobs:

As shown in the examples below, there are several styles of knobs. Properties are provided to modify the knob's style, outer radii, width, and color. Additionally, user defined knob shapes may be specified.

Mark:

Each knob may be adorned with a single mark. Properties are provided to modify the mark's style, inner-outer radii, width, and color. Additionally, user defined mark shapes may be incorporated into the control.

Tics:

Tics are used to mark intervals on the control face. Properties are provided to set the tic's style, start-stop values, interval, inner-outer radii, width, color, and label positions. The examples below indicate the flexibility provided with the tic properties.

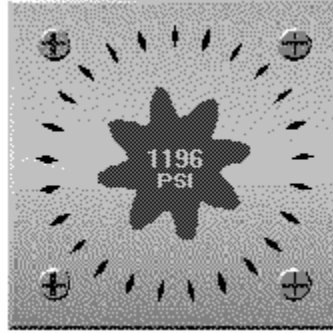
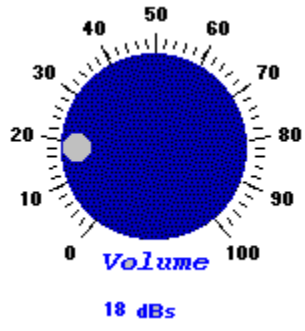
Annulars:

Annulars are used for aesthetics as well as indicators of operating ranges. Properties are provided to modify annular's start-stop values, inner-outer radii, and color. Multiple annular regions can be placed on a single control.

Captions:

The control can be embellished with multiple captions to indicate the type of measurement being displayed, units used or any other informative or decorative labeling.

Examples:



Events:

Click
DragDrop
DragOver
GotFocus
KeyDown
KeyPress
KeyUp
LostFocus
MouseDown
MouseMove
MouseUp
Turn

Properties:

| | | |
|--------------------|--------------------|-----------------|
| AnnularColor | FontItalic | Name |
| AnnularID | FontName | OutlineAlign |
| AnnularInnerRadius | Fonts | OutlineColor |
| AnnularOuterRadius | FontSize | OutlineTitle |
| Annulars | FontStrike | OutlineWidth |
| AnnularStartValue | FontUnder | Redraw |
| AnnularStopValue | FrameColor | ScaleDirection |
| AutoRedraw | FramePicture | ScaleMaxValue |
| BackgroundColor | FrameScaleX | ScaleMinValue |
| BackgroundPicture | FrameScaleY | ScaleOriginX |
| BevelInner | FrameStyle | ScaleOriginY |
| BevelOuter | Height | ScaleStartAngle |
| BevelWidth | Index | ScaleStopAngle |
| BorderType | KnobColor | TabIndex |
| BorderWidth | KnobMultiTurn | TabStop |
| Caption | KnobMultiTurnValue | Tag |
| CaptionColor | KnobPicture | TicColor |
| CaptionFontID | KnobRadius | TicDeltaValue |
| CaptionID | KnobSnap | TicFontID |
| Captions | KnobSnapIncrement | TicID |
| CaptionX | KnobStyle | TicInnerRadius |
| CaptionY | KnobUserDefined | TicLabel |
| Digital | KnobValue | TicLabelRadius |
| DigitalColor | Left | TicOuterRadius |
| DigitalDecimals | MarkColor | Tics |
| DigitalFontID | MarkInnerRadius | TicStartValue |
| DigitalX | MarkOuterRadius | TicStopValue |
| DigitalY | MarkStyle | TicStyle |
| Enabled | MarkUserDefined | TicWidth |
| FontBold | MarkWidth | Top |
| FontDialog | MouseControl | Visible |
| FontID | MousePointer | Width |



LED CONTROL

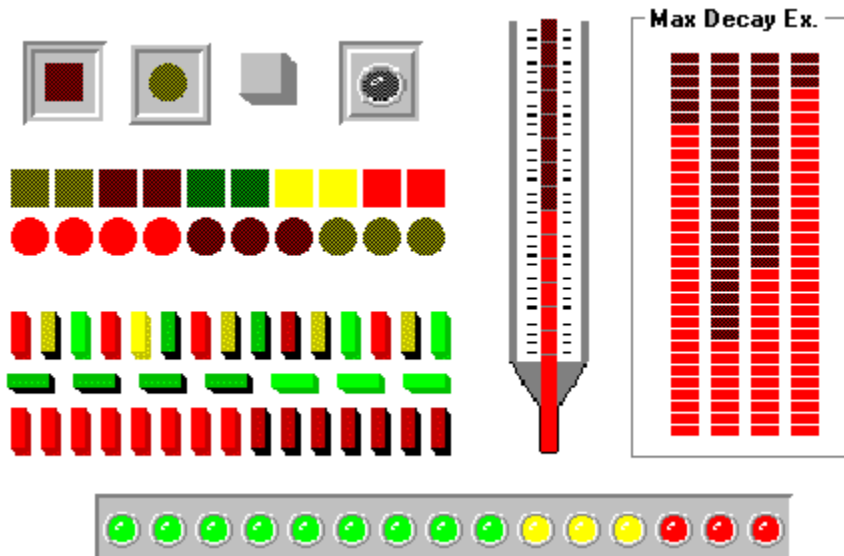
Properties

Events

Description:

This control displays a variety of LED styles including rectangular, circular, and user supplied bitmaps. The control can display a single LED as an on/off indicator or it may be configured as an array of horizontal or vertical LEDs to indicate an array of on/off indicators (Bitwise Mode) or a gauge or linear meter (Value Mode). The mouse can be used for input when the MouseControl property is set to **TRUE**. The control includes bevels for a 3D appearance.

Examples:



Events:

Click
GotFocus
LostFocus
MouseDown
MouseMove
MouseUp

Properties:

| | | |
|-------------------|-----------------|------------------|
| AutoRedraw | LEDColor | OffPictureRed |
| AutoSize | LEDHeight | OffPictureYellow |
| BackColor | LEDIndex | OnPictureGreen |
| BackgroundPicture | LEDIndex | OnPictureRed |
| BevelInner | LEDSep | OnPictureYellow |
| BevelOuter | LEDStatus | Orientation |
| BevelWidth | LEDStyle | Redraw |
| BorderHorizontal | LEDWidth | TabIndex |
| BorderVertical | Left | TabStop |
| BorderWidth | MaxDecay | Tag |
| DecayRate | Mode | Top |
| Direction | MouseControl | Value |
| Enabled | Name | Visible |
| Height | NumLEDs | Width |
| Index | OffPictureGreen | |



LINEAR GAUGE (LGAUGE) CONTROL

[Properties](#)

[Events](#)

Description:

The generic linear gauge control is a highly customizable gauge or slider control. Properties are provided to modify the gauge's scales, tics, pointers, bands, captions, border and background. The mouse can optionally be used to change pointer values.

Scales:

Scales are used to define the extent of the units displayed by the gauge, the location of the gauge center, and the gauge's start and stop positions. Multiple scales are supported.

Pointers:

Pointers can be displayed in a variety of shapes and sizes. Properties are used to modify the pointers's style, size, width, color and associated scale. Multiple pointers can be placed on a single gauge.

Tics:

Tics are used to mark intervals on the gauge's face. Properties are used to set the tic's style, start-stop values, interval, inner-outer positions, width, color, label positions, and associated scale.

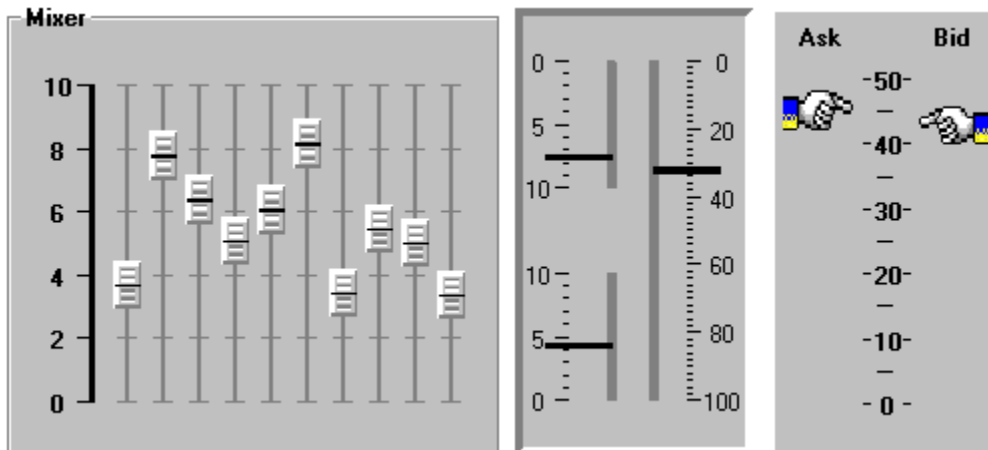
Bands:

Bands are used for aesthetics as well as indicators of operating ranges. Properties are provided to modify the band's start-stop values, inner-outer positions, color, and associated scale. Multiple bands can be placed on a single gauge.

Captions:

The gauge can be embellished with multiple captions to indicate the type of measurement being displayed, units used or any other informative or decorative labeling.

Examples:



Events:

Change
Click
DragDrop
DragOver
GotFocus
KeyDown
KeyPress
KeyUp
LostFocus
MouseDown
MouseMove
MouseUp
Slide

Properties:

| | | |
|---------------|------------------------|--------------------|
| AutoRedraw | Fonts | PointerValue |
| BackColor | FontSize | PointerWidth |
| BackPicture | FontStrike | Redraw |
| BandColor | FontUnder | ScaleDirection |
| BandID | Height | ScaleID |
| BandInner | Index | ScaleMax |
| BandOuter | Left | ScaleMin |
| BandPicture | MousePointer | ScalePositionStart |
| Bands | Name | ScalePositionStop |
| BandScaleID | Orientation | Scales |
| BandShape | PointerColor | TabIndex |
| BandStart | PointerDigital | TabStop |
| BandStop | PointerDigitalColor | Tag |
| BandStyle | PointerDigitalDecimals | TicColor |
| BevelInner | PointerDigitalFontID | TicDelta |
| BevelOuter | PointerDigitalX | TicFontID |
| BevelWidth | PointerDigitalY | TicID |
| BorderWidth | PointerID | TicInner |
| Caption | PointerInner | TicLabelOn |
| CaptionColor | PointerMouseControl | TicLabelPosition |
| CaptionFontID | PointerOuter | TicOuter |
| CaptionID | PointerPicture | Tics |
| Captions | Pointers | TicScaleID |
| CaptionX | PointerScaleID | TicShape |
| CaptionY | PointerShape | TicStart |
| Enabled | PointerSnap | TicStop |
| FontBold | PointerSnapIncrement | TicStyle |
| FontDialog | PointerStart | TicWidth |
| FontID | PointerStop | Top |
| FontItalic | PointerStyle | Visible |
| FontName | PointerType | Width |



ODOMETER CONTROL

[Properties](#)

[Events](#)

Description:

The Odometer Control displays a simple odometer which has properties for font control, optional reset button, number of digits and number of decimal values. If a reset button is desired, the mouse may be used to reset the odometer. The control includes bevels for a 3D appearance.



Events:

Click
GotFocus
LostFocus
MouseDown
MouseMove
MouseUp
Reset

Properties:

| | | |
|-------------|--------------|--------------|
| BackColor | FontItalic | ResetButton |
| BevelInner | FontName | ResetPicture |
| BevelOuter | FontSize | TabIndex |
| BevelWidth | FontStrike | TabStop |
| BorderWidth | FontUnder | Tag |
| Decimals | Height | Top |
| DigitColor | Index | Value |
| Digits | Left | Visible |
| Enabled | MousePointer | WheelColor |
| FontBold | Name | Width |



PERCENTAGE INDICATOR CONTROL

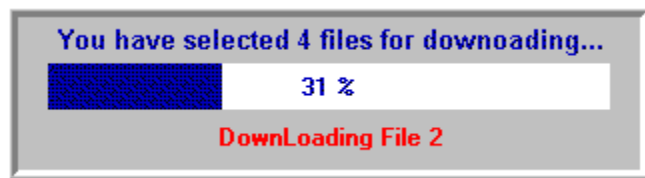
[Properties](#)

[Events](#)

Description:

The Percentage Indicator Control can quickly be configured to display percentage bars (horizontal or vertical), ellipses or pre-defined "tanks". Additionally, a user-defined polygon may be used. The display can be filled in a linear or radial (pie) fashion - forward or backward. Bitmaps or colors may be utilized to define the *ON* and *OFF* regions of the display. Percentages are calculated manually or automatically.

Example:



Events:

Change
Click
GotFocus
LostFocus
MouseDown
MouseMove
MouseUp

Properties:

| | | |
|---------------|--------------|---------------|
| AutoRedraw | Enabled | OffPicture |
| BackColor | FontBold | OnColor |
| BackPicture | FontDialog | OnPicture |
| BarBorder | FontID | Orientation |
| BarInner | FontItalic | Percent |
| BarOuter | FontName | PercentColor |
| BevelInner | Fonts | PercentFontID |
| BevelOuter | FontSize | PercentStyle |
| BevelWidth | FontStrike | Redraw |
| BorderWidth | FontUnder | Shape |
| Caption | Height | ShapeStyle |
| CaptionColor | Index | TabIndex |
| CaptionFontID | Left | TabStop |
| CaptionID | Max | Tag |
| Captions | Min | Top |
| CaptionX | MouseControl | Value |
| CaptionY | MousePointer | Visible |
| Direction | Name | Width |
| DisplayMode | OffColor | |

PRODUCT SUPPORT

Product support for all products is available to registered users by contacting **Global Majic Software, Inc.** at any of the following locations:

CompuServe: 73261,3642

AmericaOnline: GMagic

Internet: gms@globalmajic.com

Snail Mail: Global Majic Software, Inc.
P.O. Box 322
Madison, Alabama 35758

TEL/FAX: (205) 864-0708

Home Page: <http://www.globalmajic.com>

Product Support is free for a period of three (3) months from the date of registration.

If you have a shareware-related problem or dispute that you are unable to resolve with **Global Majic Software, Inc.**, please feel free to contact the [Association of Shareware Professionals](#).



SELECTOR CONTROL

[Properties](#)

[Events](#)

Description:

This control is a highly customizable selector switch. Properties are provided to modify the knob and mark styles, selections, line, offsets, captions, border and background. The mouse may optionally be used to change selector settings.

Selections:

Each switch may have several possible selections. The caption, color, alignment, and offset of each selection is controlled by the user. Additionally, there are automatic features that define the control with minimal work required.

Lines and Offsets:

The control's lines are controlled by the user. Properties are available to change line's inner radius and thickness as well as whether or not lines are visible. Offsets, on the other hand, may be controlled by either the control or the user. The length and angle of each offset can be set.

Knob:

There are several styles of knobs that may be used in the selector switch control. Properties are provided to modify the knob's style, inner-outer radii, width, and color. Additionally, user defined shapes may be specified.

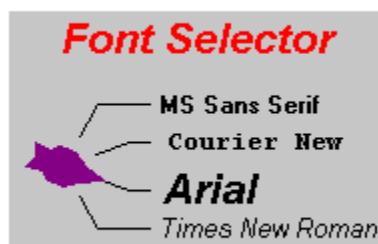
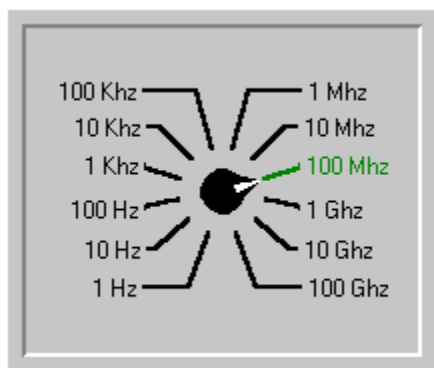
Mark:

Each knob may be adorned with a single mark. Properties are provided to modify the mark's style, inner-outer radii, width, and color. Additionally, user defined mark shapes may be incorporated into the control.

Captions:

The control can be embellished with multiple captions to indicate the type of measurement being displayed, units used or any other informative or decorative labeling. These captions are in no way related to the captions defined for each selection.

Examples:



Events:

Change
Click
GotFocus
KeyDown
KeyPress
KeyUp
LostFocus
MouseDown
MouseMove
MouseUp

Properties:

| | | |
|--------------------|-----------------|------------------|
| AutoAlign | FontName | MarkStyle |
| AutoAngle | Fonts | MarkUserDefined |
| AutoAngleConfine | FontSize | MarkWidth |
| AutoOffset | FontStrike | MouseControl |
| AutoOffsetDistance | FontUnder | MousePointer |
| AutoOffsetStyle | FrameColor | Name |
| AutoRadius | FramePicture | OutlineAlign |
| AutoStartAngle | FrameScaleX | OutlineColor |
| AutoStopAngle | FrameScaleY | OutlineTitle |
| BackgroundColor | FrameStyle | OutlineWidth |
| BackgroundPicture | Height | SelectionAlign |
| BevelInner | Highlight | SelectionAngle |
| BevelOuter | HighlightColor | SelectionCaption |
| BevelWidth | Index | SelectionColor |
| BorderType | KnobColor | SelectionFontID |
| BorderWidth | KnobOriginX | SelectionID |
| Caption | KnobOriginY | SelectionOffsetX |
| CaptionColor | KnobRadius | SelectionOffsetY |
| CaptionFontID | KnobStyle | SelectionRadius |
| CaptionID | KnobUserDefined | Selections |
| Captions | Left | TabIndex |
| CaptionX | LineDisplay | TabStop |
| CaptionY | LineInnerRadius | Tag |
| Enabled | LineThickness | Top |
| FontBold | MarkColor | Value |
| FontDialog | MarkInnerRadius | Visible |
| FontID | MarkOuterRadius | Width |
| FontItalic | | |



SLIDER CONTROL

Properties

Events

Description:

The Slider Custom Control is highly versatile and customizable. It was designed to allow the user to easily create any control, gauge, meter, etc. that incorporates a sliding mechanism in its functioning. The control is equipped with properties to change the On/Off characteristics of the sliding bar, the background, the tic marks, and the knob handle. Additionally, properties have been included to control both direction (forward or backward) and orientation (vertical or horizontal).

Bars:

The slider bar properties allow the user to manipulate the On/Off characteristics of the slider separately. The user can either use a color or a bitmap to fill the *ON* or *OFF* bar area. Also, the width, border, and position of the bar can be controlled through the properties.

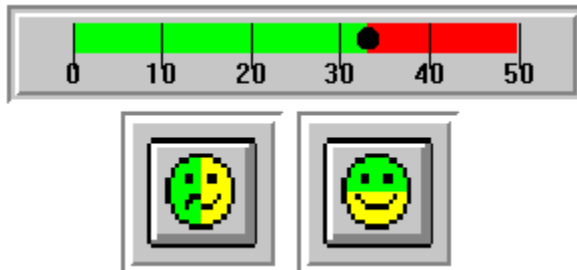
Knobs:

There are also properties available to manipulate a knob. Knob properties exist for changing the scaling, offset, color, shape, and bitmap

Tics:

Tics are used to mark intervals on the instrument's face. Properties are provided to set the tic's style, start-stop values, interval, inner-outer positions, width, color, and label positions.

Example:



Events:

Change
Click
DragDrop
DragOver
GotFocus
KeyDown
KeyPress
KeyUp
LostFocus
MouseDown
MouseMove
MouseUp

Properties:

| | | |
|-----------------|--------------|------------------|
| AutoRedraw | FontBold | OnPicture |
| BackColor | FontDialog | Orientation |
| BackPicture | FontID | Redraw |
| BarBorder | FontName | Shape |
| BarInner | Fonts | ShapeStyle |
| BarOuter | FontSize | Snap |
| BevelInner | FontStrike | SnapIncrement |
| BevelOuter | FontUnder | TabIndex |
| BevelWidth | Height | TabStop |
| BorderWidth | Index | Tag |
| Caption | KnobColor | TicColor |
| CaptionColor | KnobOffset | TicDelta |
| CaptionFontID | KnobPicture | TicFontID |
| CaptionID | KnobStyle | TicID |
| Captions | KnobXScale | TicInner |
| CaptionX | KnobYScale | TicLabelOn |
| CaptionY | Left | TicLabelPosition |
| Digital | Max | TicOuter |
| DigitalColor | Min | Tics |
| DigitalDecimals | MouseControl | TicStart |
| DigitalFontID | MousePointer | TicStop |
| DigitalX | Name | Top |
| DigitalY | OffColor | Value |
| Direction | OffPicture | Visible |
| Enabled | OnColor | Width |
| FontItalic | | |



TOGGLE CONTROL

[Properties](#)

[Events](#)

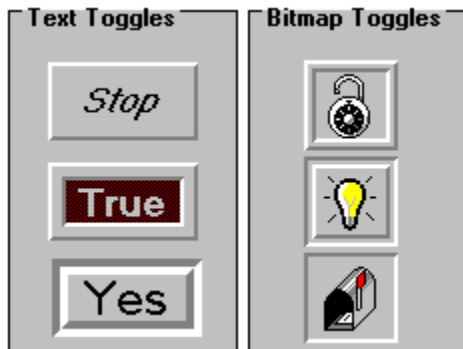
Description:

The Toggle Switch Control is a TRUE/FALSE, YES/NO or ON/OFF indicator. The control displays captions or pictures to represent the toggle state depending on the control's value. The control is capable of playing wave files to indicate the switch turning *ON* or *OFF*. It includes bevels for a 3D appearance and blinking capability to draw attention to the control. It also has a built in timed shut-off and blinking capability.

Remarks:

Wave files used with the control will **not** be stored in the control like the bitmap files. Therefore, all wave files need to accompany your application. Be careful with using many timers and blinking controls on a single form because Windows has a limited number of timer handles.

Examples:



Events:

Click
DragDrop
GotFocus
LostFocus
MouseDown
MouseMove
MouseUp

Properties:

| | | |
|-------------|--------------|--------------|
| AutoSize | Left | OnX |
| BackColor | MouseControl | OnY |
| BevelInner | MousePointer | Outline |
| BevelOuter | Name | OutlineColor |
| BevelWidth | OffBackColor | PushPicture |
| BlinkMode | OffCaption | PushX |
| BlinkRate | OffForeColor | PushY |
| BorderWidth | OffPicture | Sound |
| Enabled | OffWave | TabIndex |
| FontBold | OffX | TabStop |
| FontItalic | OffY | Tag |
| FontName | OnBackColor | Top |
| FontSize | OnCaption | TwoState |
| FontStrike | OnForeColor | Value |
| FontUnder | OnPicture | Visible |
| Height | OnTimer | Width |
| Index | OnWave | |

WHAT IS SHAREWARE?

Shareware distribution gives users a chance to try software before buying it. If you try a Shareware program and continue using it, you are expected to register. Individual programs differ in detail -- some request registration while others require it, some specify a maximum trial period. With registration, you get anything from the simple right to continue using the software to an updated program with printed manual.

Copyright laws apply to both Shareware and commercial software, and the copyright holder retains all rights, with a few specific exceptions as stated below. Shareware authors are accomplished programmers, just like commercial programmers, and the programs are of comparable quality. (in both cases there are good programs and bad ones!) The main difference is in the method of distribution. The author specifically grants the right to copy and distribute the software, either to all and sundry or to a specific group. For example, some authors require written permission before a commercial disk vendor may copy their Shareware.

Shareware is a distribution method, not a type of software. You should find software that suits your needs and pocketbook, whether it's commercial or Shareware. The Shareware system makes fitting your needs easier, because you can try before you buy. And because the overhead is low, prices are low also. Shareware has the ultimate money-back guarantee -- if you don't use the product, you don't pay for it.

DISCLAIMER - AGREEMENT

Users of Instrument Custom Control Library must accept this disclaimer of warranty: "Instrument Custom Control Library is supplied as is. The author disclaims all warranties, expressed or implied, including, without limitation, the warranties of merchantability and of fitness for any purpose. The author assumes no liability for damages, direct or consequential, which may result from the use of Instrument Custom Control Library."

Instrument Custom Control Library is a "shareware library" and is provided at no charge to the user for evaluation. Feel free to share it with your friends, but please do not give it away altered or as part of another system. The essence of "user-supported" software is to provide personal computer users with quality software without high prices, and yet to provide incentive for programmers to continue to develop new products. If you find this library useful and find that you are using Instrument Custom Control Library and continue to use Instrument Custom Control Library after a reasonable trial period, you must register the software with Global Majic Software, Inc. The registration fee will license one copy for use on any one computer at any one time. You must treat this software just like a book. An example is that this software may be used by any number of people and may be freely moved from one computer location to another, so long as there is no possibility of it being used at one location while it's being used by another. Just as a book cannot be read by two different persons at the same time.

Commercial users of Instrument Custom Control Library must register and pay for their copies of Instrument Custom Control Library within 30 days of first use or their license is withdrawn. Site-License arrangements may be made by contacting Global Majic Software, Inc.

Anyone distributing Instrument Custom Control Library for any kind of remuneration must first contact Global Majic Software, Inc. at the address below for authorization.

You are encouraged to pass a copy of Instrument Custom Control Library along to your friends for evaluation. Please encourage them to register their copy if they find that they can use it. All registered users will receive a copy of the latest version of Instrument Custom Control Library.

CONTACTING GLOBAL MAJIC SOFTWARE, INC.

WHY REGISTER?

Register because you find the software useful and you feel the efforts put into writing the code are worth compensating.

Register because you would like to be informed of updates to this software.

Register because you want to encourage the author to spend time to develop other useful shareware software.

Register because you would like to have technical support.

Register because you want to get rid of those annoying sign-on banners.

